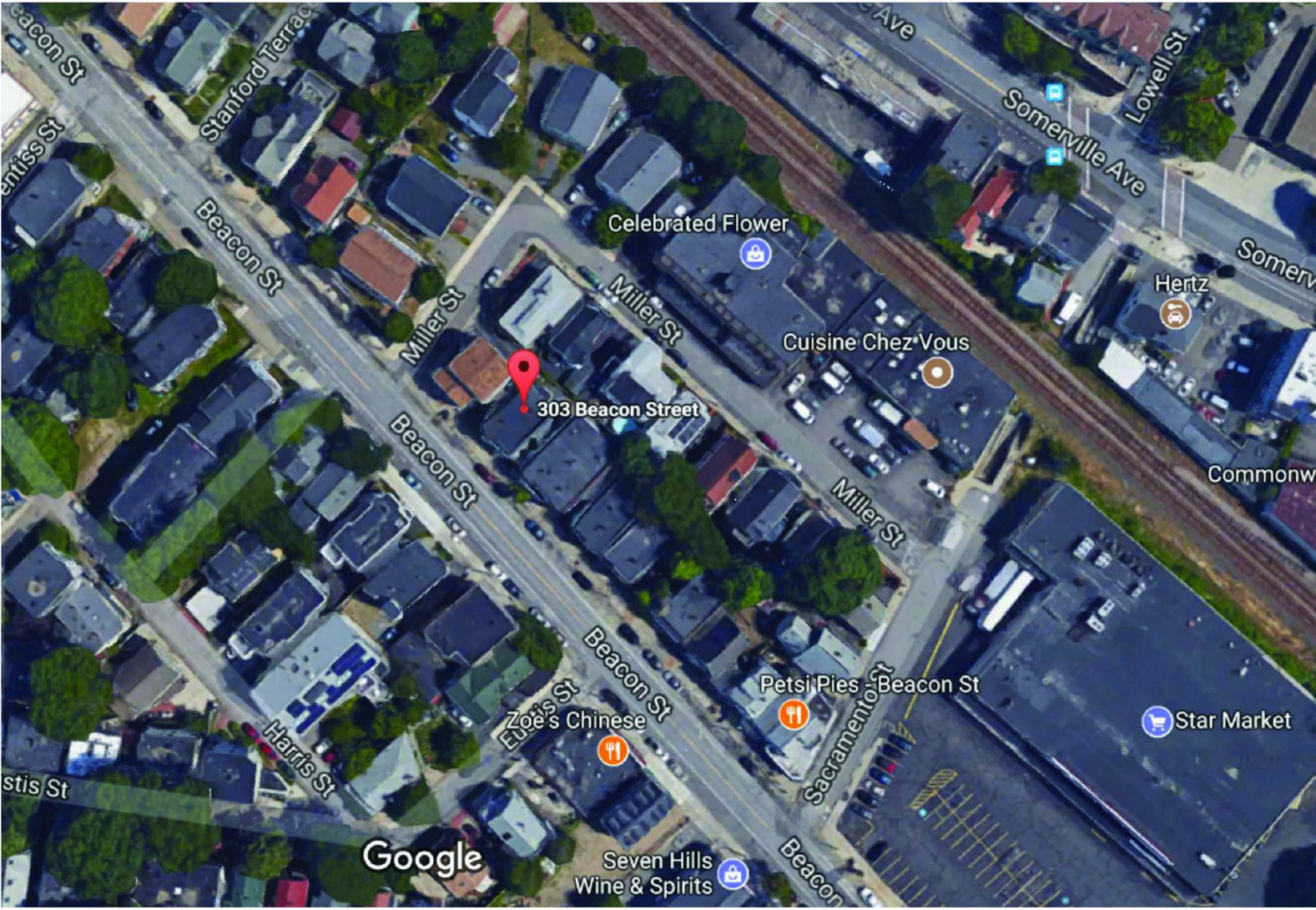


1 EX. SITE/LANDSCAPE  
1" = 10'-0"



LOCATION MAP (NTS)

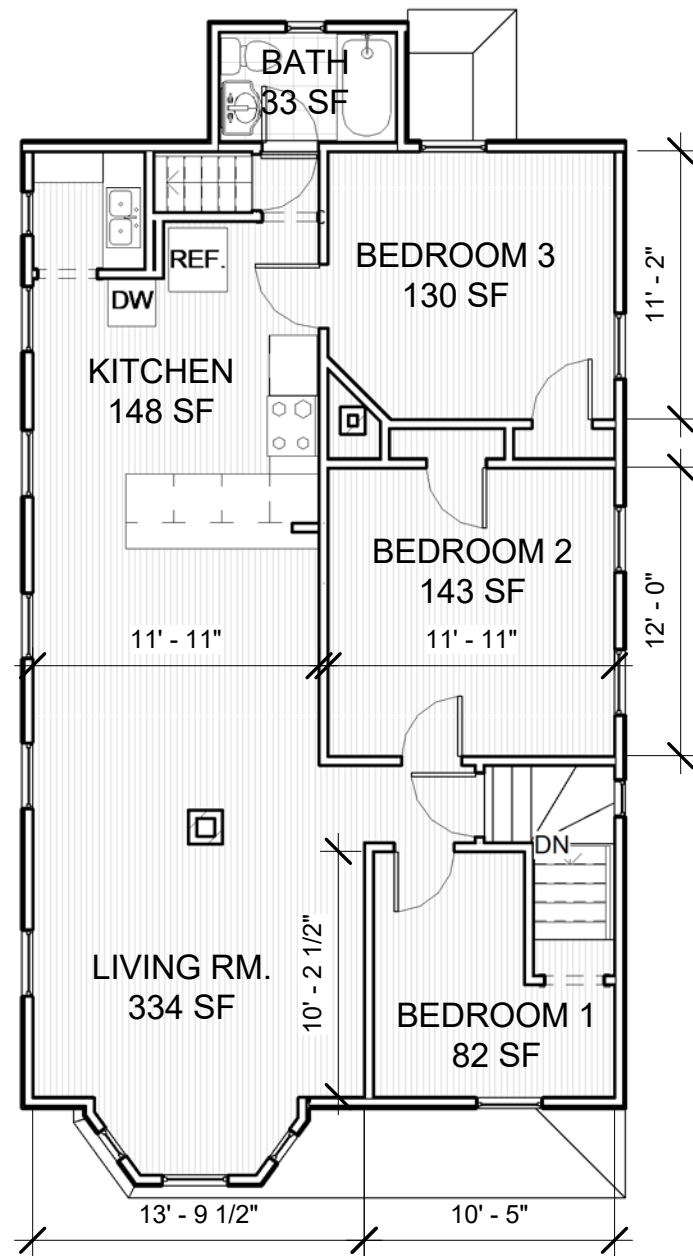
PROPOSED RENOVATIONS TO:

# Shepard Residence

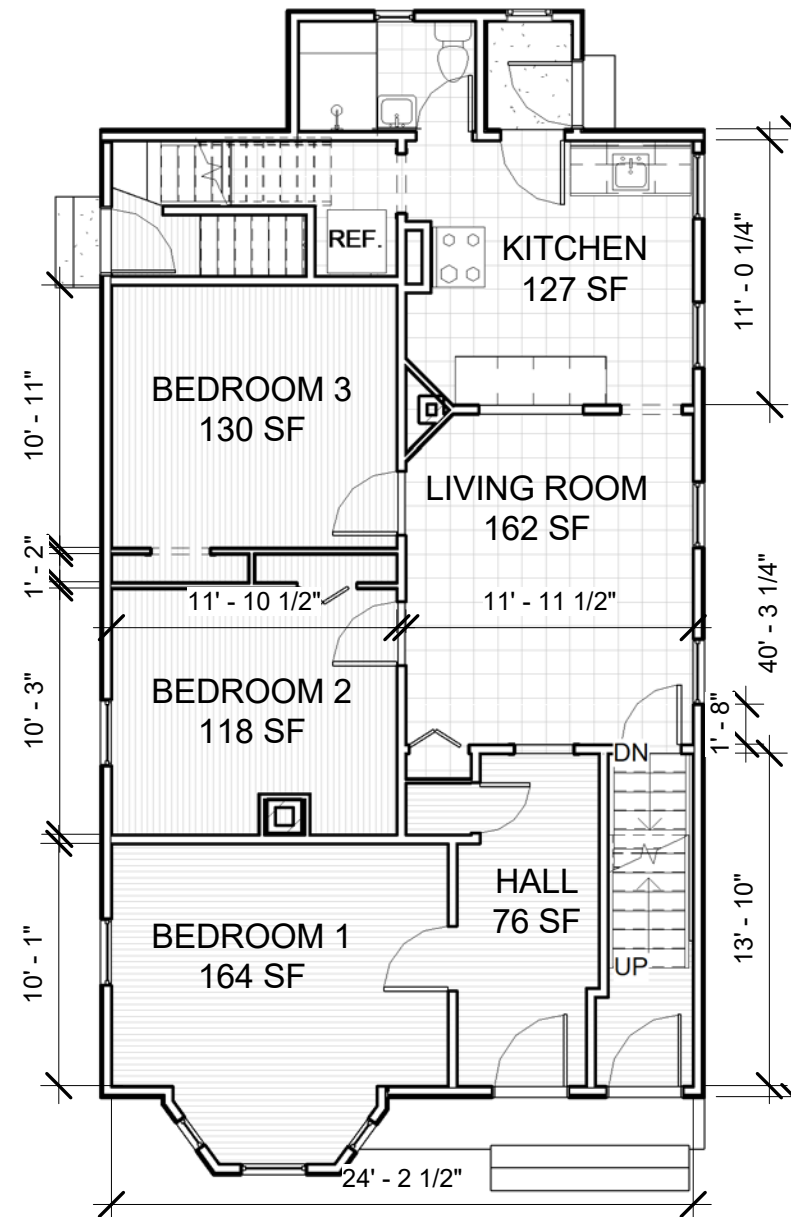
303 Beacon Street, Somerville, MA

No.	Description	Date
2	Landscape Plan	8/4/17

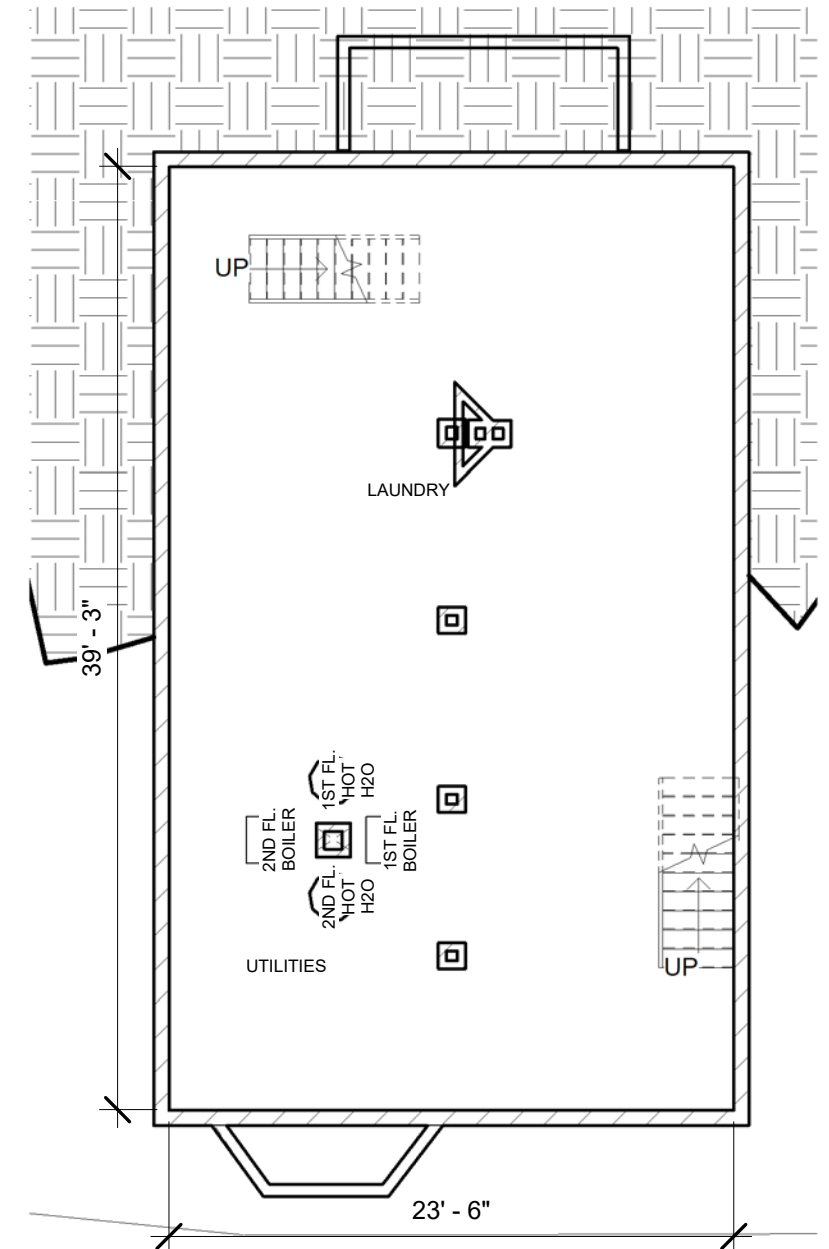
EX. SITE		
Project number	Ab1702	EX1.0
Date	7/13/17	
Drawn by	CD	
Checked by	Checker	
Scale 1" = 10'-0"		



② 2nd Floor - Unit 2  
1/8" = 1'-0"



① 1st Floor - Unit 1  
1/8" = 1'-0"



③ Basement  
1/8" = 1'-0"

No.	Description	Date

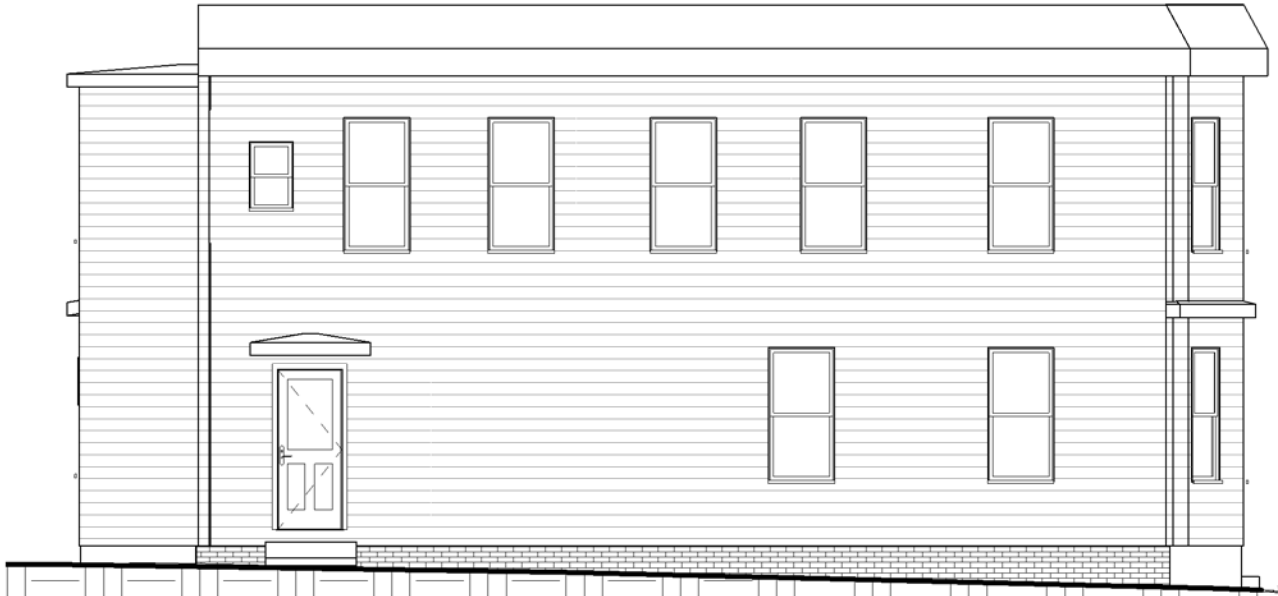
## EX. FLOOR PLANS

Project number	Ab1702	Scale	1/8" = 1'-0"
Date	7/13/17	<b>EX1.1</b>	
Drawn by	CD		
Checked by	Checker		



EXISTING EXTERIOR MATERIALS:

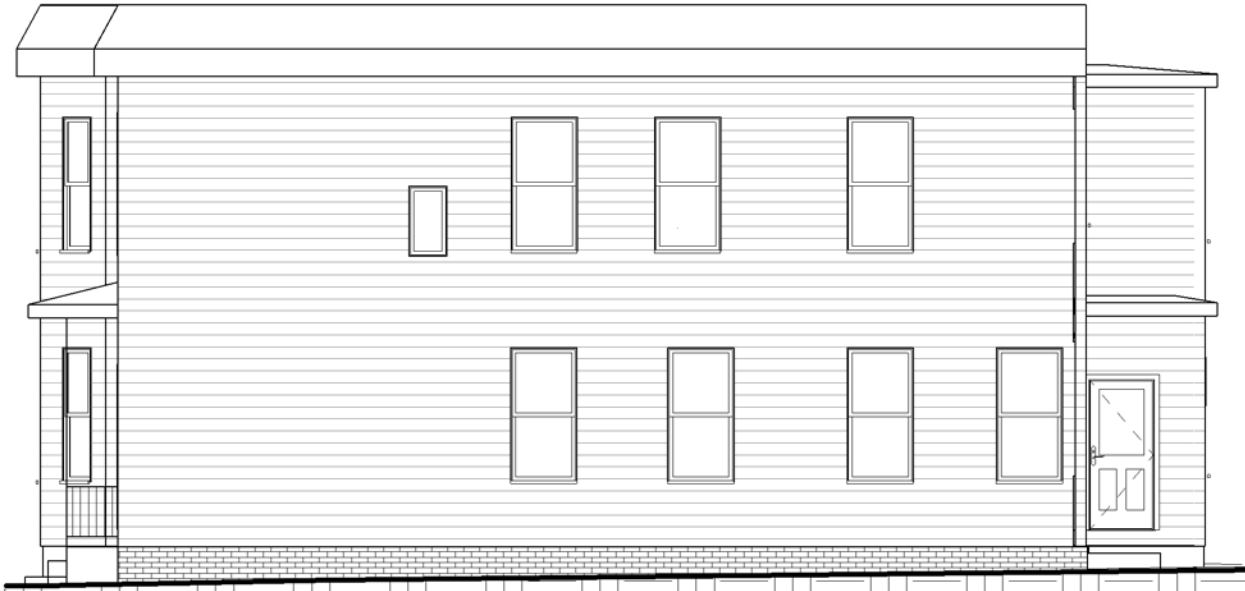
- LIGHT GREEN VINYL SIDING
- WOOD TRIM, PAINTED DARK
- ASPHALT SHINGLED PARAPET WALL
- WROUGHT IRON POST AND RAILINGS



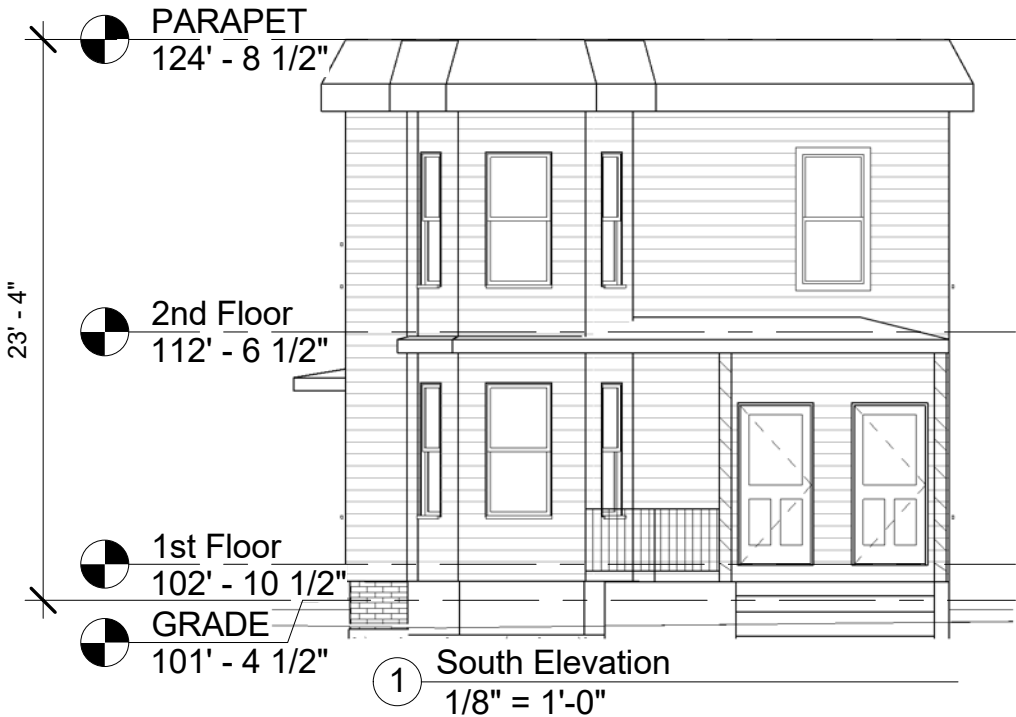
④ West Elevation  
1/8" = 1'-0"



② North Elevation  
1/8" = 1'-0"



③ East Elevation  
1/8" = 1'-0"



① South Elevation  
1/8" = 1'-0"



**AURORA**  
CUSTOM BUILDERS

AURORA CUSTOM BUILDERS INC.  
96 Winchester Street / Medford MA 02155  
617 299 1309 / aurorabuilds.com / hello@aurorabuilds.com

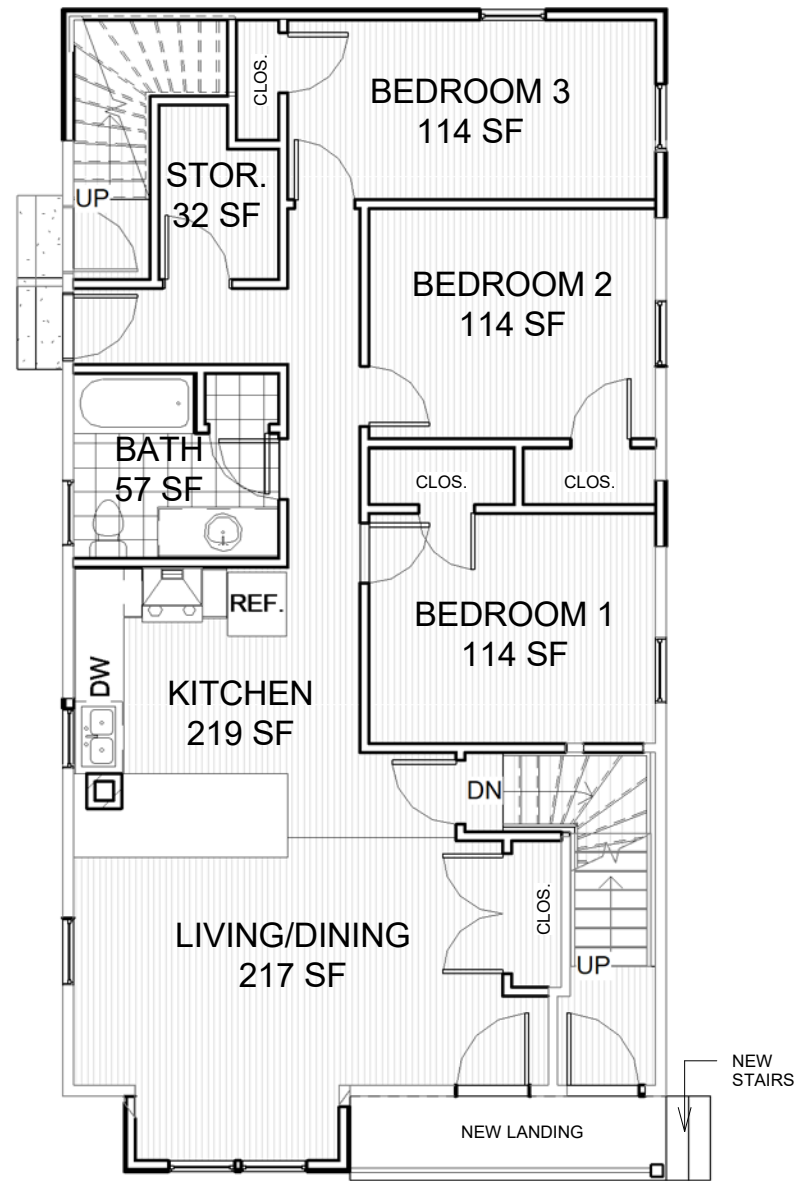
PROPOSED RENOVATIONS TO:

**Shepard Residence**

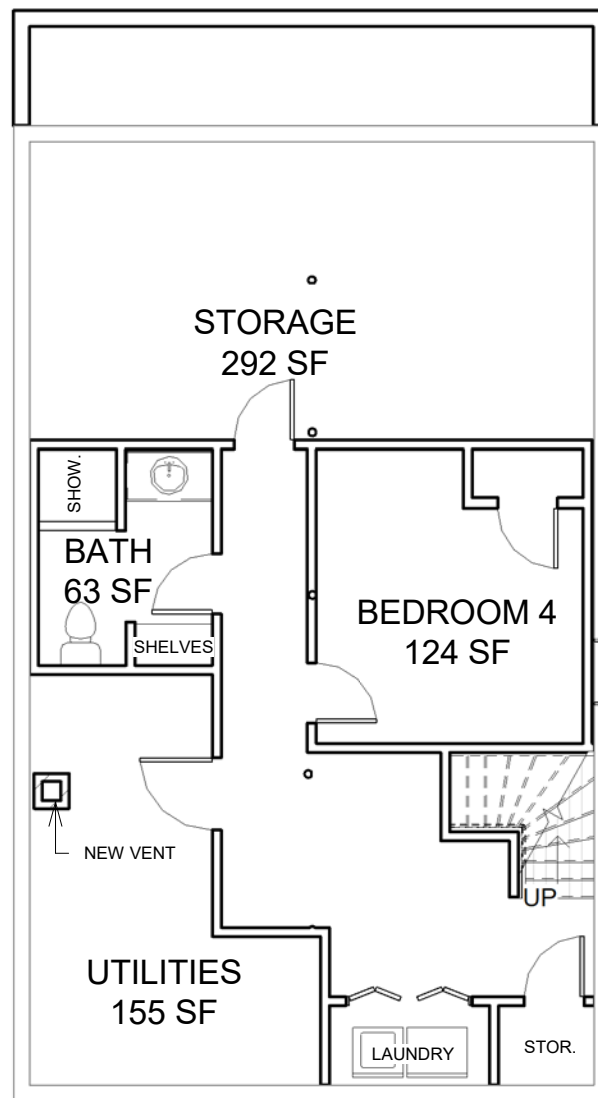
**303 Beacon Street, Somerville, MA**

No.	Description	Date

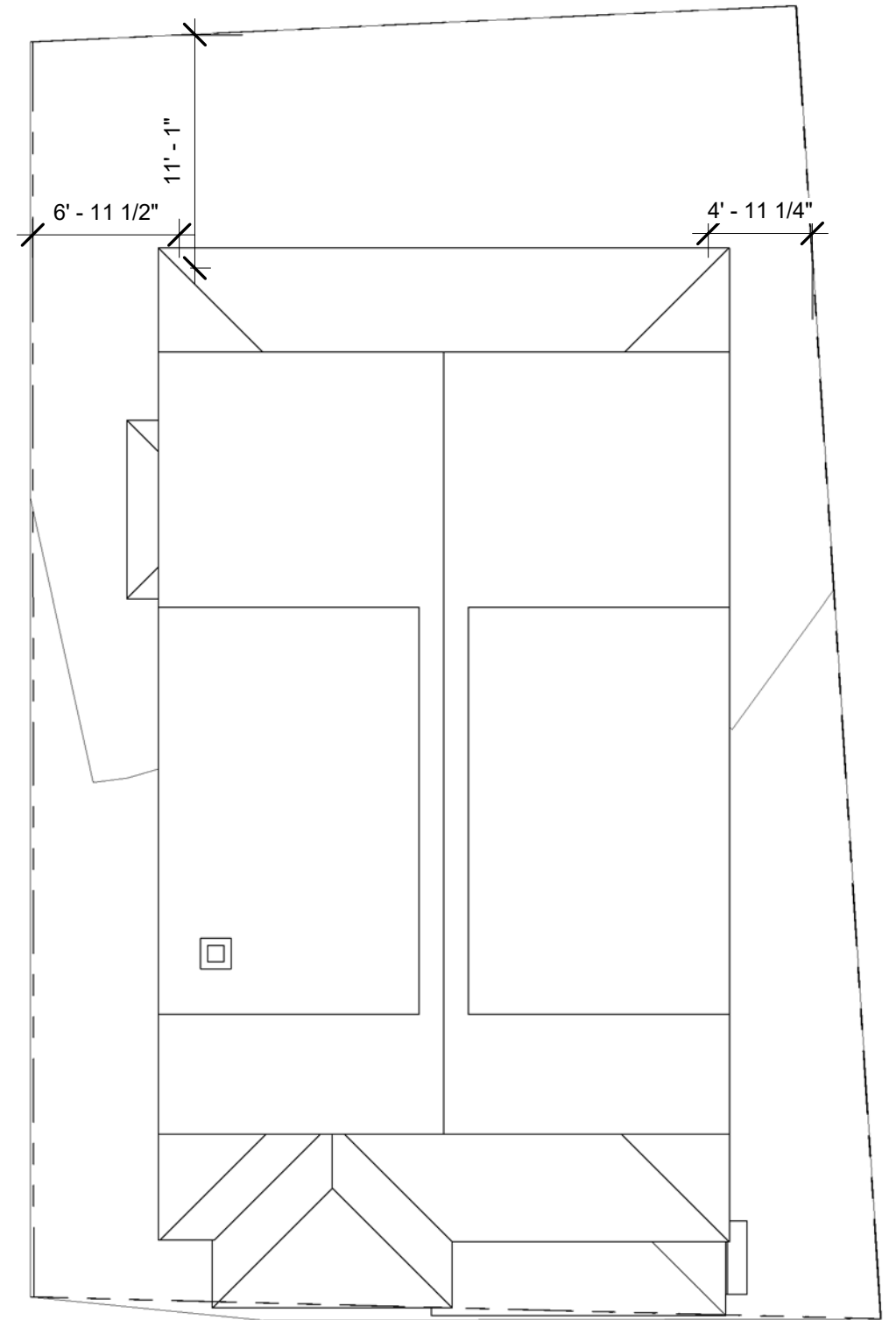
EX. ELEVATIONS		
Project number	Ab1702	Scale 1/8" = 1'-0"
Date	7/13/17	
Drawn by	Author	
Checked by	Checker	
		EX2.1



② New 1st Floor - Unit 1  
1/8" = 1'-0"



① New Basement - Unit 1  
1/8" = 1'-0"

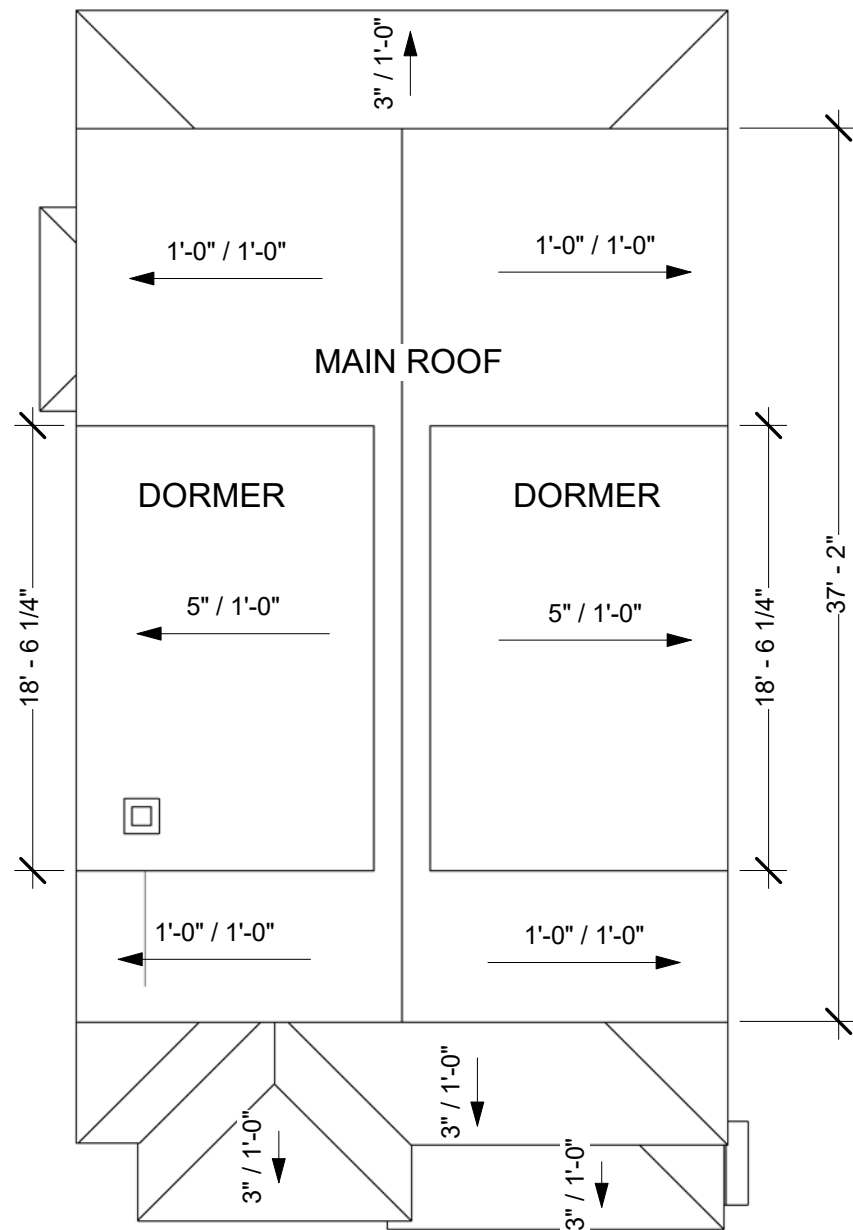


③ New Site Plan  
1/8" = 1'-0"

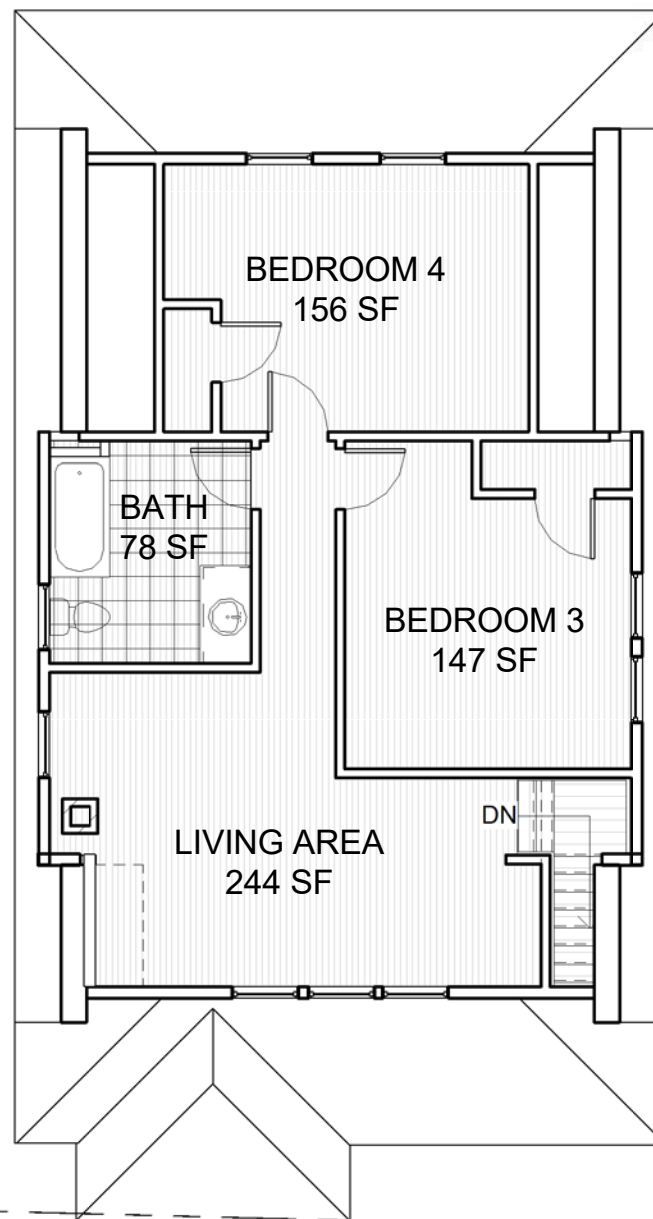
No.	Description	Date

## NEW FLOOR PLANS

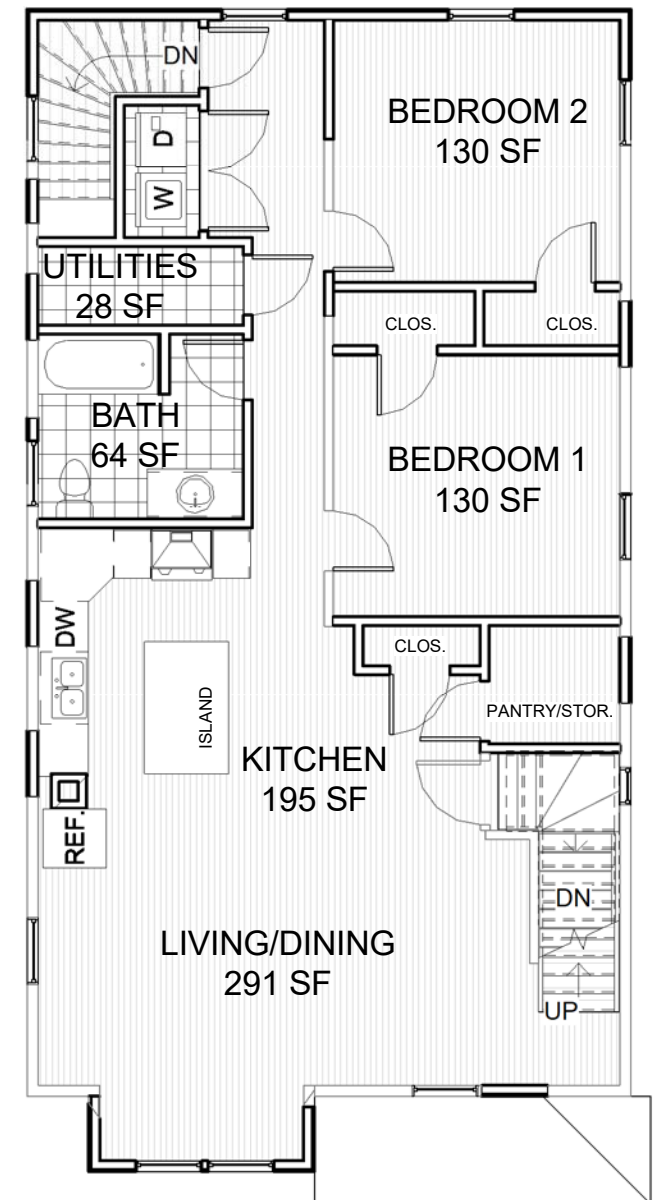
Project number	Ab1702	Scale	1/8" = 1'-0"
Date	7/13/17	<b>A1-1</b>	
Drawn by	CD		
Checked by	Checker		



③ New Roof Plan  
1/8" = 1'-0"



② New 2 -1/2 Floor - Unit 2  
1/8" = 1'-0"



① New 2nd Floor - Unit 2  
1/8" = 1'-0"

No.	Description	Date
1	Roof Dimensions	8/4/17

## NEW FLOOR PLANS

Project number	Ab1702	Scale	1/8" = 1'-0"
Date	7/13/17	<b>A1-2</b>	
Drawn by	CD		
Checked by	-		

- PROPOSED EXTERIOR MATERIALS:**
- NEUTRAL COLORED CEMENTITIOUS CLAPBOARD SIDING
  - WOOD TRIM, PAINTED WHITE
  - GRAY ASPHALT SHINGLED ROOFS
  - PAINTED WOOD POST AND RAILINGS



2 VIEW FROM SW



1 VIEW FROM SE



**AURORA**  
CUSTOM BUILDERS

AURORA CUSTOM BUILDERS INC.  
96 Winchester Street / Medford MA 02155  
617 299 1309 / aurorabuilds.com / hello@aurorabuilds.com

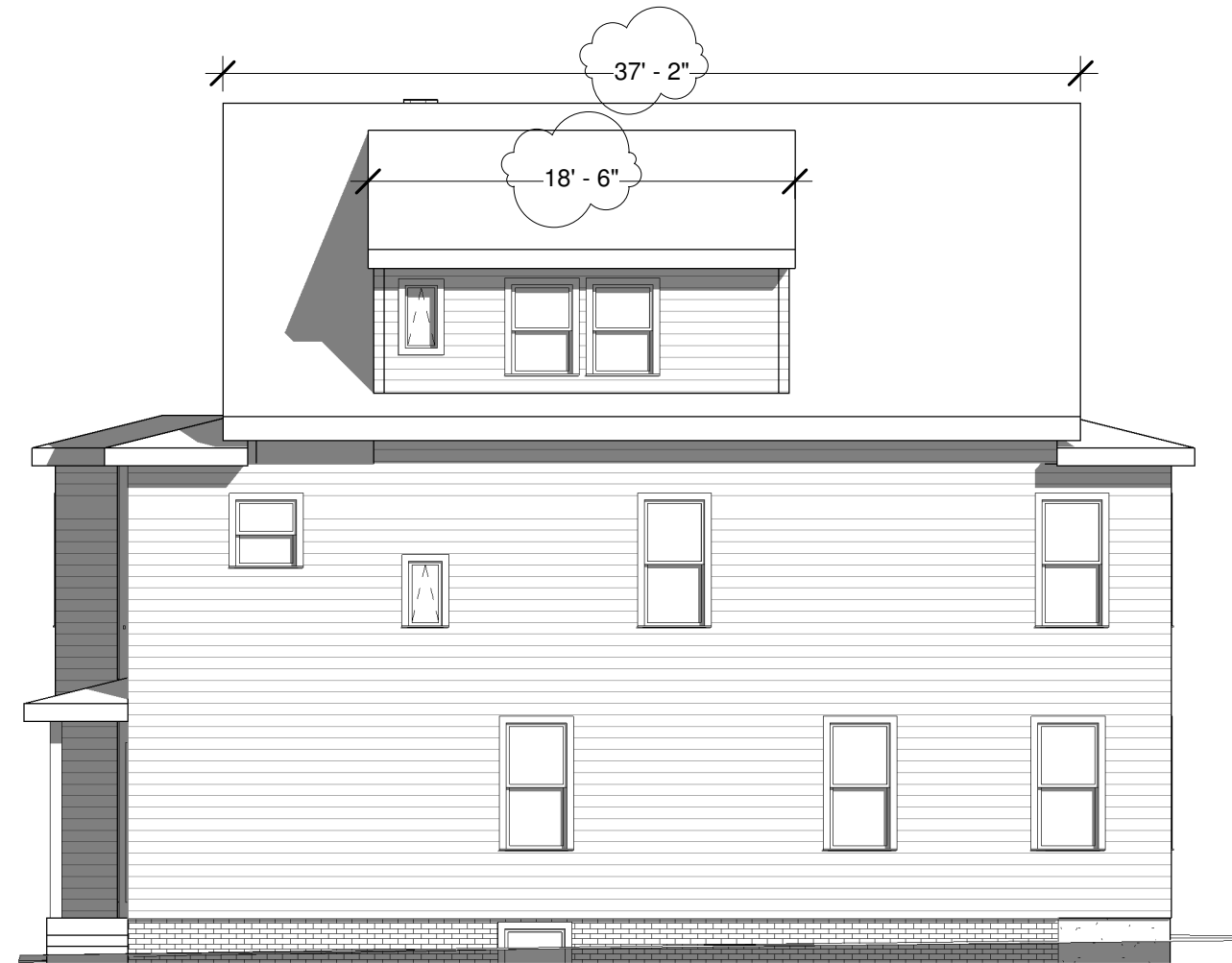
PROPOSED RENOVATIONS TO:

**Shepard Residence**

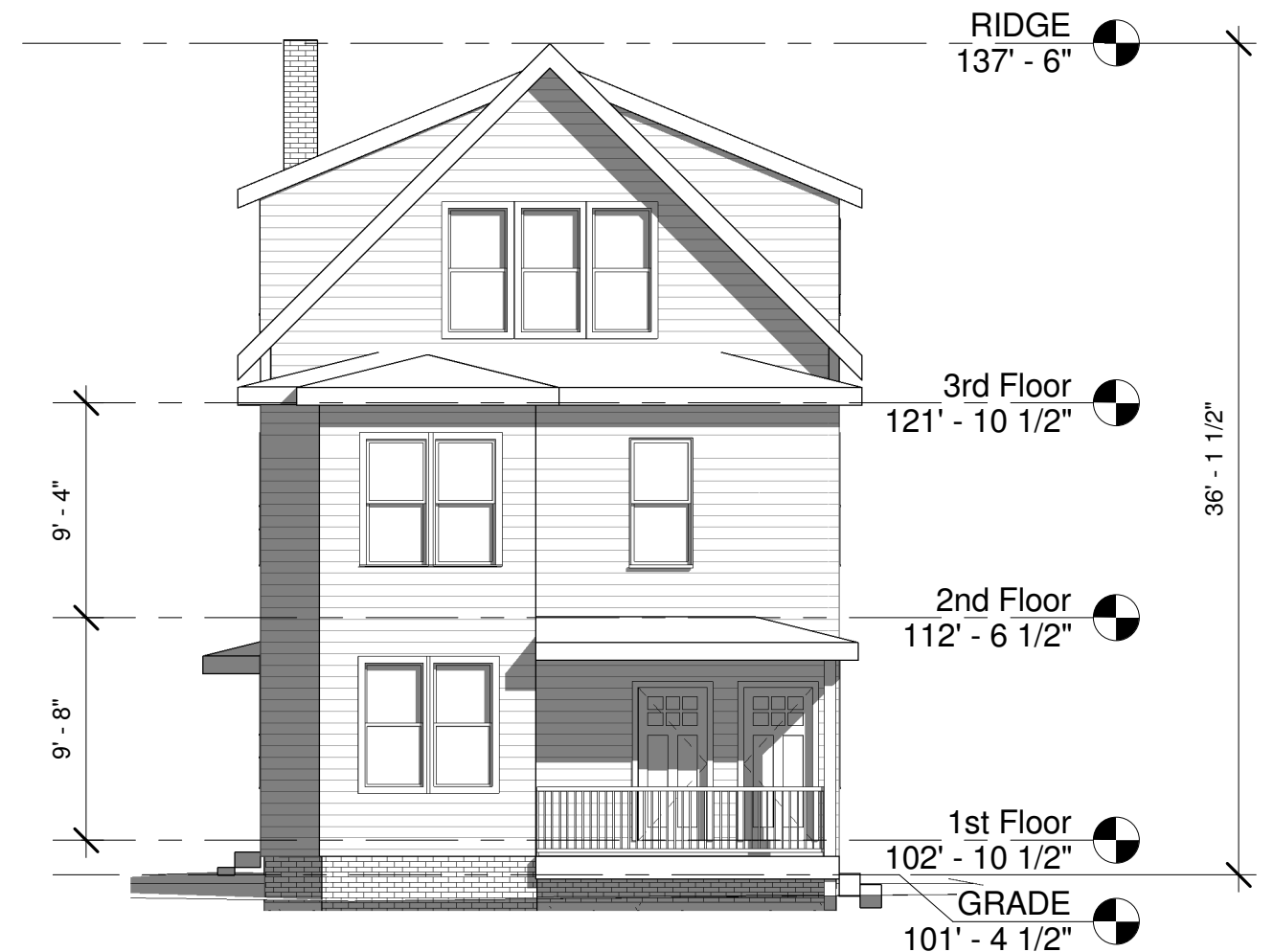
**303 Beacon Street, Somerville, MA**

No.	Description	Date

NEW EXT. VIEWS		
Project number	Ab1702	Scale  <b>A2-1</b>
Date	7/13/17	
Drawn by	CD	
Checked by	-	



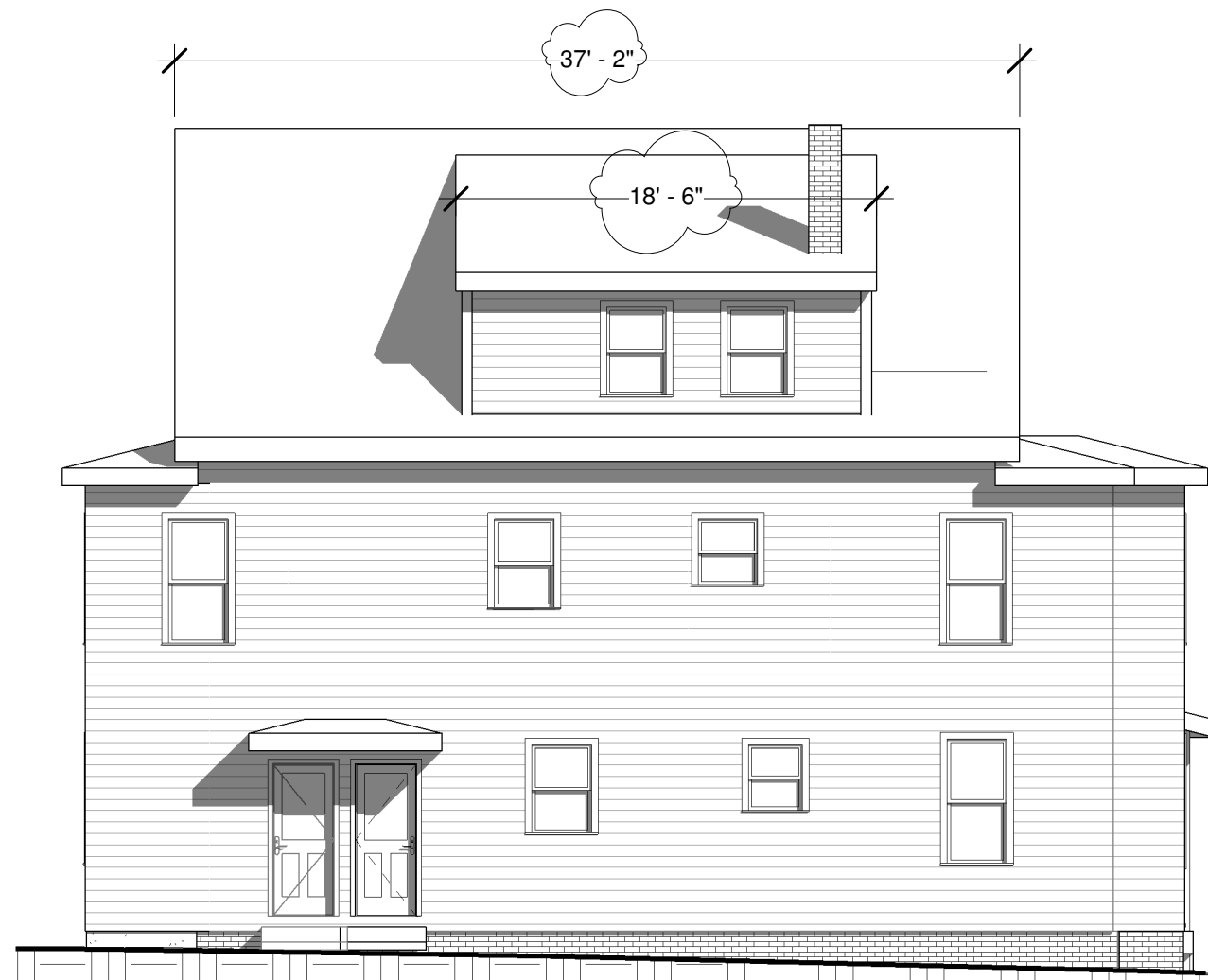
2 NEW EAST ELEVATION  
1/8" = 1'-0"



1 NEW SOUTH ELEVATION  
1/8" = 1'-0"

No.	Description	Date
1	Roof Dimensions	8/4/17

NEW ELEVATIONS		
Project number	Ab1702	A2-2
Date	7/13/17	
Drawn by	CD	
Checked by	-	
Scale 1/8" = 1'-0"		



② NEW WEST ELEVATION  
1/8" = 1'-0"



① NEW NORTH ELEVATION  
1/8" = 1'-0"

No.	Description	Date
1	Roof Dimensions	8/4/17

NEW ELEVATIONS		
Project number	Ab1702	A2-3
Date	7/13/17	
Drawn by	CD	
Checked by	-	
Scale 1/8" = 1'-0"		





LOOKING SE DOWN BEACON STREET



LOOKING NW UP BEACON STREET



ACROSS FROM 303 BEACON STREET



303 BEACON STREET



**AURORA**  
CUSTOM BUILDERS

AURORA CUSTOM BUILDERS INC.  
96 Winchester Street / Medford MA 02155  
617 299 1309 / aurorabuilds.com / hello@aurorabuilds.com

PROPOSED RENOVATIONS TO:

Shepard Residence

303 Beacon Street, Somerville, MA

No.	Description	Date

EXISTING PHOTOS		
Project number	Ab1702	P1
Date	7/13/17	
Drawn by	Author	
Checked by	Checker	